

KARIBAN

K465

Sweatshirt de senhora com capuz em contraste

- Sweatshirt com capuz bicolor com um look casual e descontraído.
- Com interior cardado para um conforto excelente.
- Bolso à canguru e carcela com orifícios de acesso para os auriculares.

80% algodão penteado/20% poliéster. Interior cardado. Bolso canguru com orifícios de acesso para os auriculares. Acabamento da manga e cós em malha rib. Capuz forrado em contraste com cordão de ajuste.



XS S M L XL XXL



280 g/m²

Informações complementares

Logística



1



20



PK - Paquistão
BD - Bangladesh

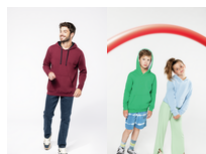
País de origem

Código aduaneiro



61102099

Também existe em versão



K446

K453

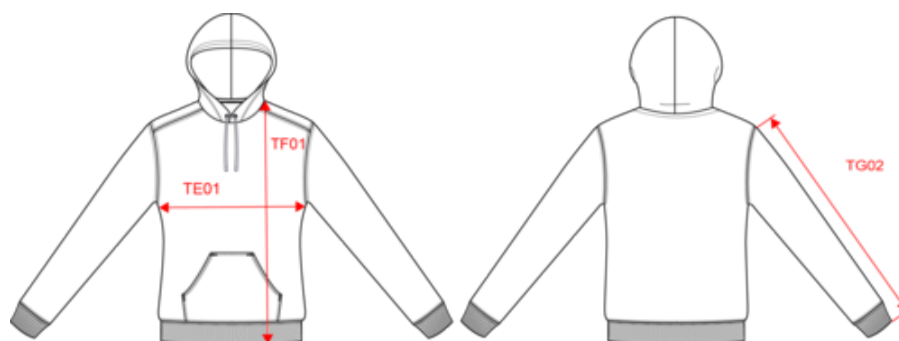


KARIBAN

K465

Sweatshirt de senhora com capuz em contraste

Dimensão



Measurements in cm	XS	S	M	L	XL	XXL
TE01 - 1/2 chest width at 1.5cm below armhole	45.00	48.00	51.00	54.00	57.00	60.00
TF01 - Total height from HSP	62.00	64.00	66.00	68.00	70.00	72.00
TG02 - Long sleeve length	61.50	62.50	63.50	64.50	65.50	66.50

KARIBAN

K465

Sweatshirt de senhora com capuz em contraste

Informações das cores

 Black RVB : 35,35,37 Pantone C : Black Pantone TCX : 19-4004TCX	 Fine Grey RVB : 135,138,140 Pantone C : 877C Pantone TCX : 17-4405TCX	 Black RVB : 35,35,37 Pantone C : Black Pantone TCX : 19-4004TCX	 Red RVB : 195,32,54 Pantone C : 200C Pantone TCX : 19-1664TCX	 Black RVB : 35,35,37 Pantone C : Black Pantone TCX : 19-4004TCX	 Yellow RVB : 254,186,36 Pantone C : 1235C Pantone TCX : 15-0955TCX	 Dark Grey RVB : 63,60,60 Pantone C : 447C Pantone TCX : 19-0000TCX	 Black RVB : 35,35,37 Pantone C : Black Pantone TCX : 19-4004TCX	 Fuchsia RVB : 188,21,94 Pantone C : 7425C Pantone TCX : 18-1945TCX	 Fine Grey RVB : 135,138,140 Pantone C : 877C Pantone TCX : 17-4405TCX
 Light Kelly Green RVB : 0,163,83 Pantone C : 7482C Pantone TCX : 17-6153TCX	 White RVB : 236,236,252 Pantone C : White Pantone TCX : 11-0601TCX	 Light Royal Blue RVB : 53,95,151 Pantone C : 653C Pantone TCX : 18-4041TCX	 White RVB : 236,236,252 Pantone C : White Pantone TCX : 11-0601TCX	 Light Royal Blue RVB : 53,95,151 Pantone C : 653C Pantone TCX : 18-4041TCX	 Yellow RVB : 254,186,36 Pantone C : 1235C Pantone TCX : 15-0955TCX	 Navy RVB : 41,46,56 Pantone C : 433C Pantone TCX : 19-4012TCX	 Fine Grey RVB : 135,138,140 Pantone C : 877C Pantone TCX : 17-4405TCX	 Navy RVB : 41,46,56 Pantone C : 433C Pantone TCX : 19-4012TCX	 Red RVB : 195,32,54 Pantone C : 200C Pantone TCX : 19-1664TCX
 Orange RVB : 252,107,16 Pantone C : 1585C Pantone TCX : 16-1364TCX	 White RVB : 236,236,252 Pantone C : White Pantone TCX : 11-0601TCX	 Oxford Grey RVB : Based on Cool gray 7C Pantone C : 433C Pantone TCX : 19-4012TCX	 Navy RVB : 41,46,56 Pantone C : 433C Pantone TCX : 19-4012TCX	 Purple RVB : 84,67,105 Pantone C : 7447C Pantone TCX : 19-3620TCX	 Oxford Grey RVB : Based on Cool gray 7C Pantone C : 433C Pantone TCX : 19-4012TCX	 Red RVB : 195,32,54 Pantone C : 200C Pantone TCX : 19-1664TCX	 White RVB : 236,236,252 Pantone C : White Pantone TCX : 11-0601TCX	 Sky Blue RVB : 136,169,206 Pantone C : 5425C Pantone TCX : 14-4121TCX	 White RVB : 236,236,252 Pantone C : White Pantone TCX : 11-0601TCX
 Tropical Blue RVB : 0,111,159 Pantone C : 7468C Pantone TCX : 18-4537TCX	 White RVB : 236,236,252 Pantone C : White Pantone TCX : 11-0601TCX	 White RVB : 135,138,140 Pantone C : 877C Pantone TCX : 17-4405TCX	 Fine Grey RVB : 135,138,140 Pantone C : 877C Pantone TCX : 17-4405TCX						

Logística  1  20

Sizes	Width (cm)	Height (cm)	Length (cm)	Net weight (kg)	Gross weight (kg)	Pieces/Box	Pieces/Bundle
XS	40.00	28.00	60.00	8.20000	9.50000	20	5
S	40.00	28.00	60.00	9.00000	10.30000	20	5
M	40.00	28.00	60.00	9.10000	10.40000	20	5
L	40.00	30.00	60.00	9.70000	11.00000	20	5
XL	40.00	30.00	60.00	9.70000	11.60000	20	5
XXL	40.00	30.00	60.00	10.30000	12.60000	20	5